

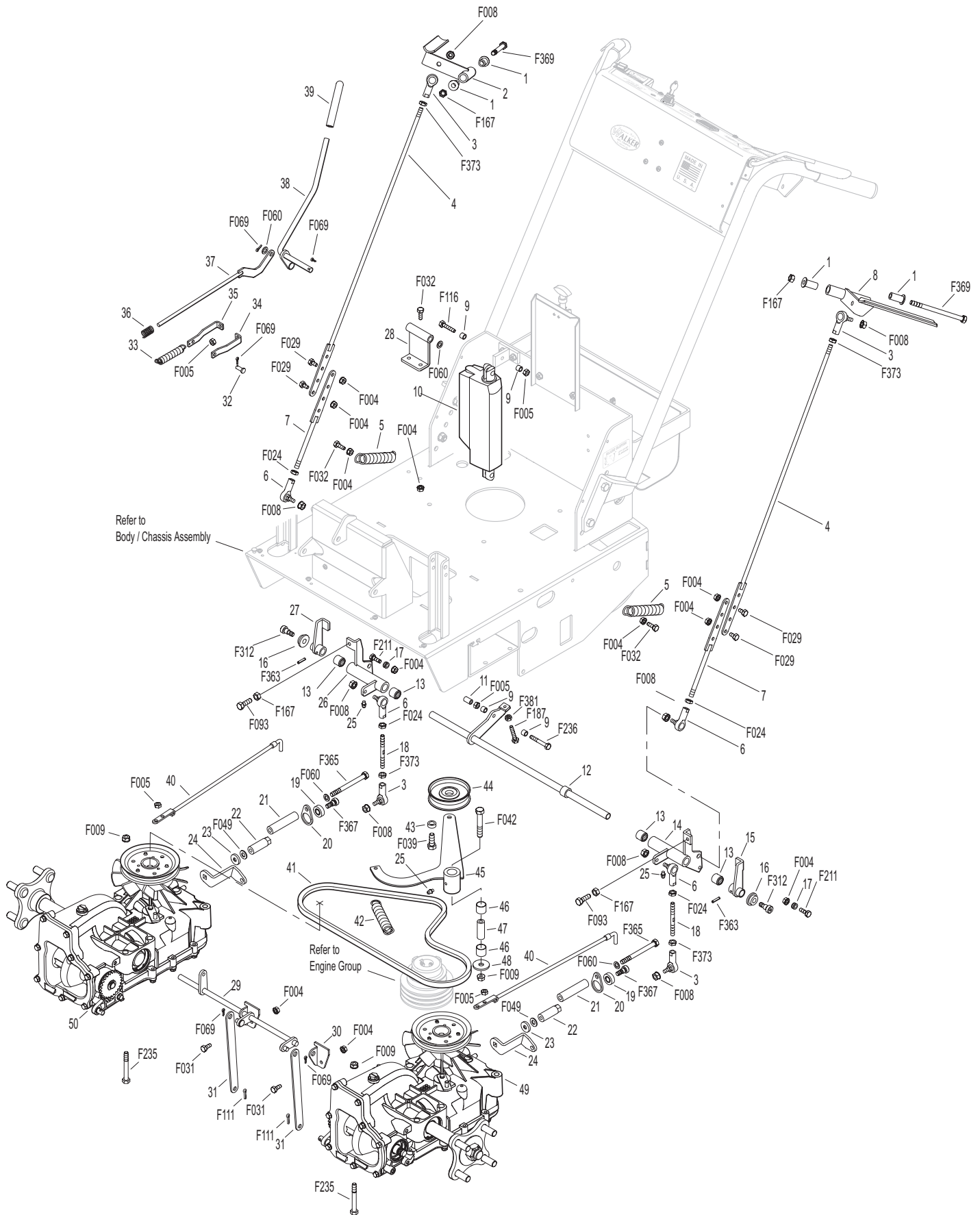
# FORWARD SPEED & STEERING CONTROLS

ITEM NO.	PART NO.	DESCRIPTION	NO. REQ'D	ITEM NO.	PART NO.	DESCRIPTION	NO. REQ'D
<b>Steering Lever Assembly</b>				<b>Ground Drive Assemblies</b>			
1	5103-2	Pivot Bushing (5/16 ID)	4	40	9027	Lockout Rod	2
2	9701	Control Handle, LH	1	41	9248	Ground Drive Belt	1
3	5214-3	Ball Joint (5/16-24LH) (Nylon Lined)	4	42	5221	Extension Spring (3/4 x 4)	1
4	9703-2	Linkage Rod, Upper Lever (LH Threaded)	2	43	9349-1	Pulley Spacer, Belt Tightener	1
5	9706-1	Extension Spring (3/4 x 4)	2	44	5245	Idler Pulley (3")	1
6	5214-2	Ball Joint (5/16-24) (Nylon Lined)	4	45	9349	Hydro Belt Tightener Arm (Includes Items # 25, 46 & 47)	1
7	9703-1	Linkage Rod, Lower Lever	2	46	7201-3	DU Bearing	2
8	9702	Control Handle, RH	1	47	7201-4	Inner Race (1-1/2)	1
<b>FSC Linkage &amp; Steering Linkage Assembly</b>				48	5841	(3/8 x 1-1/4) Retainer Washer	1
9	9622	Plastic Bushing, Actuator	4	49	9025	Hydro-Gear, LH	1
10	9621	FSC Actuator	1	50	9026	Hydro-Gear, RH	1
11	9623	Switch Bushing, Actuator	1	<b>Fasteners</b>			
12	9704	Steering Pivot Rod	1	F004	1/4-20 Keps Nut		12
13	9705-2	Bearing, Speed Actuator	4	F005	1/4-20 ESNA Nut		5
14	9706	Speed Control Actuator, RH (Includes Items # 13 & 25)	1	F008	5/16-24 Keps Nut		8
15	9704-2	Speed Control Stop, RH	1	F009	5/16-18 Whiz Locknut		3
16	9704-3	Pivot Rod Bushing, Plastic	2	F024	5/16-24 Jam Nut		4
17	9705-1	Spring Bushing (1/4 x 1/8)	2	F029	1/4-20 x 1/2 Hex Bolt		4
18	9708-1	Control Arm Rod, LH Thread	2	F031	1/4-20 x 5/8 Hex Bolt		2
19	5551-1	Pivot Bearing (#S3PP)	2	F032	1/4-20 x 3/4 Hex Bolt		4
20	9707-3	Bearing Housing, Control Arm	2	F039	3/8-16 x 1-1/4 Hex Bolt		1
21	9707-2	Spacer Tube, Control Arm	2	F042	3/8-16 x 2-1/4 Hex Bolt		1
22	9707-1	Extension Nut, Hydrogear	2	F049	5/16 SAE Washer		2
23	9024	1/8 x 7/8 Washer	2	F060	AN960516 Washer		4
24	9707	Control Arm, Hydro-gear	2	F069	3/32 x 1/2 Cotter Pin		5
25	5830	Grease Fitting	3	F093	5/16-18 x 1 Hex Bolt		2
26	9705	Speed Control Actuator, LH (Includes Items 13 & 25)	1	F111	1/8 x 3/4 Cotter Pin		2
27	9704-1	Speed Control Stop, LH	1	F116	1/4-20 x 1-1/4 Hex Bolt		1
<b>Brake Assembly</b>				F167	5/16-18 Hex Nut		4
28	9406-1	Park Brake Lever Mount	1	F187	1/4-20 x 1-1/2 Hex Bolt		1
29	9407	Park Brake Actuator Rod	1	F211	1/4-20 x 7/8 Hex Bolt		2
30	9407-2	Brake Actuator Rod Mount	2	F235	5/16-18 x 2-1/2 Hex Bolt		2
31	9407-1	Park Brake Actuator Link	2	F236	1/4-20 x 1-3/4 Hex Bolt		1
32	7523-2	Clevis Pin (1/4 x 5/8)	1	F312	3/8 x 3/8 Shoulder Bolt		2
33	5225	Extension Spring (1/2 x 2-1/4)	1	F363	5/32 x 3/4 Roll Pin		2
34	9406-4	Clevis Half	1	F365	5/16-24 x 3-1/2 Hex Bolt		2
35	9406-3	Clevis Half, Spring Side	1	F367	3/8 x 1/2 Shoulder Bolt		2
36	5665	Compression Spring (1/2 x 1)	1	F369	5/16-18 x 4-1/2 Hex Bolt		2
37	9406-2	Brake Actuator Pull	1	F373	5/16-24 LH Hex Nut		4
38	9406	Park Brake Lever (Includes Item # 39)	1	F381	1/4-20 Hex Nut		1
39	7406-1	Handle Grip, Red	1				

Use only genuine **Walker**<sup>®</sup> replacement parts.

Effective Date 11-01-03

# FORWARD SPEED & STEERING CONTROLS



Effective Date 11-01-03

Use only genuine Walker® replacement parts.